

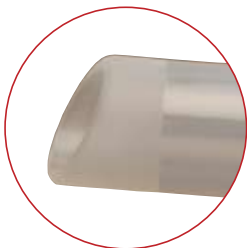
LiNA McCartney Tube™

*Improving the outcome of
Total Laparoscopic
Hysterectomy*



LiNA McCartney Tube™

The LiNA McCartney Tube™ offers you a unique single use device, sterile and ready to use.



- Soft curvature ensures no trauma to the tissue
- Tip withstands electrosurgical and ultrasonic energy



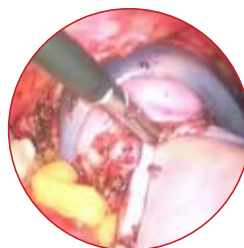
- 5 & 10mm operative valves
- Airtight, prevents loss of pneumoperitoneum
- Convenient entry for needle and suture into the pelvis



Dissecting the structure around the vaginal vault.



Removing the uterus through the LiNA McCartney Tube™.



Fast and easy suturing of the vaginal vault.



Benefits for the Gynaecologist:

- Eliminates the need for a vaginal set-up which results in reduced time and costs (as for LAVH)
- Protection of the ureters from trauma during surgery
- Identifies where to safely seal and divide the uterine vessels
- Improved visualisation resulting in a safer procedure
- Captures specimen and if necessary, lymph nodes and/or ovarian cysts, safely during removal
- Reduced tumor seeded contamination risks via the use of a safe specimen removal conduit
- No loss of pneumoperitoneum after colpotomy, decreasing time delays and increasing patient safety
- Fast and simple suturing technique of the vaginal vault

Ordering Information:

LiNA McCartney Tube™ **CE** 0459

35-TV	LiNA McCartney Tube™ - 35 mm diameter, sterile, single use	Box of 10
45-TV	LiNA McCartney Tube™ - 45 mm diameter, sterile, single use	Box of 10

Order from:

